



greenlux
cost reduction LED lighting

Angel Series LED Downlight 4" & 5"

Available in Multiple Wattage
80% lumen maintenance at 50,000 hours

- No UV or IR rays. No mercury
- Dimmable and Non-Dimmable option available
- Superb dimming effect
- SMD LED chips with high luminous flux
- PMMA diffuser to ensure even light output
- Compact, high efficiency line driver included
- Super slim design
- IP20 Rated, IP44 option
- 3 Years Warranty
- Applications include ceilings, walkways, restaurants, hotels, museums & display cases



Specifications

Colour Range	3000-6000k
Lumen	95lm/W
Power Consumption	13W/18W
Input Voltage	AC 100-240V
Operating Temp.	-10°C to 45°C
Dimming Range	10% ~ 100%
Beam angle	90°
Ra	>80
Power Factor	>0.9
Chipset	2835 SMD
Driver	Class II
IP Rating	IP20 or IP44 (option)
Dimmable	Triac 0-10V or Dali (option)

Dimensions & Materials

Product Dimensions (mm)	4" Ø145*45
	5" Ø170*45
Cutout Dimensions (mm)	4" Ø120-130
	5" Ø140-150
Housing Material	PMMA diffuser
Housing Colour	White/Silver/Black
Certifications	CE, RoHS, SAA, RCM
Environment	Indoor Location
Warranty	3 years

Certification and Safety





greenlux
cost reduction LED lighting

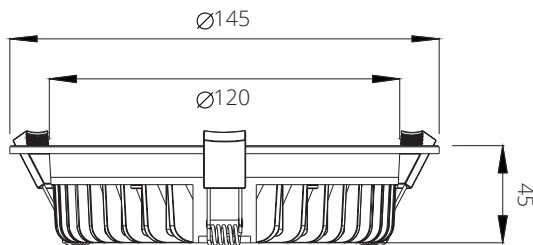
Angel Series LED Downlight 4" & 5"

Available in Multiple Wattage
80% lumen maintenance at 50,000 hours

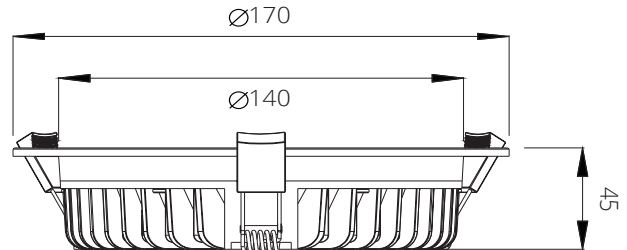
Dimensions

(mm)

4" Downlight

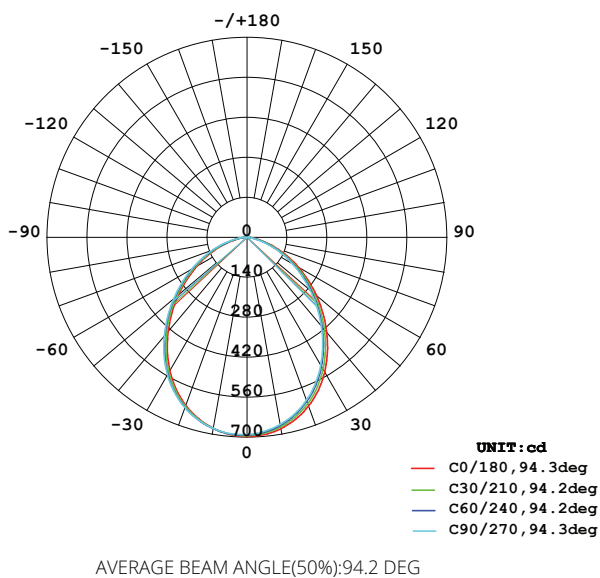


5" Downlight

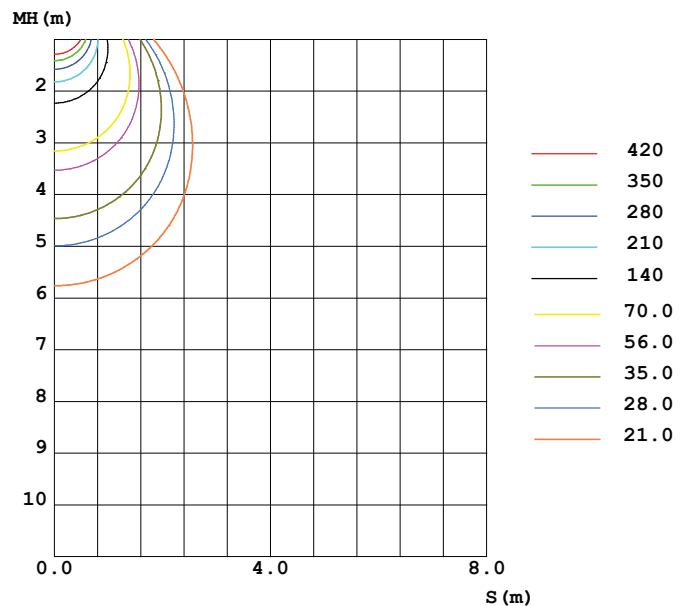


Photometrics

LUMINOUS INTENSITY DISTRIBUTION DIAGRAM



C0 PLANE ISOLUX DIAGRAM (UNIT:lx)



18W 4000k



greenlux
cost reduction LED lighting

Angel Series LED Downlight 4" & 5"

Available in Multiple Wattage
80% lumen maintenance at 50,000 hours

Model

Model#	CCT	LED Type	Lumen(lm)	Dimension (mm)	Cutout Size (mm)	Dimmable	Voltage(V)
GUANG-13W 4"	3000K 4000K 5000K	2835 SMD	1235	145*45	120-130	Triac	AC100-240V
GUANG-18W 4"			1710	145*45	120-130	Triac	
GUANG-13W 5"			1235	170*45	140-150	Triac	
GUANG-18W 5"			1710	170*45	140-150	Triac	

Light CCT Guide

