



GKD1CD1834

GKD1CC1834

LED Colour Temperature

- 2000K
- 3000K
- 6000K

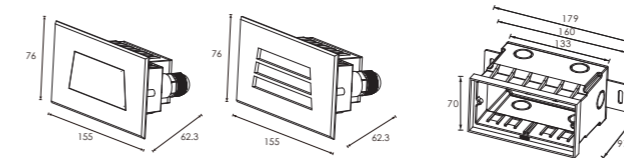
Optics

- N/A



Outer Dimensions

Unit:mm



GKD1CD1834

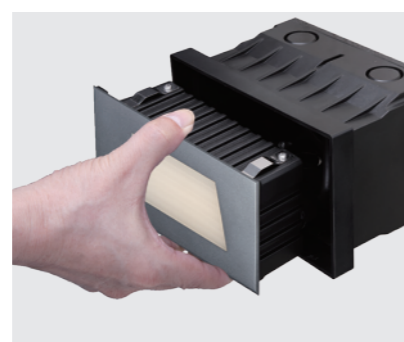
GKD1CC1834

Mounting sleeve 090#

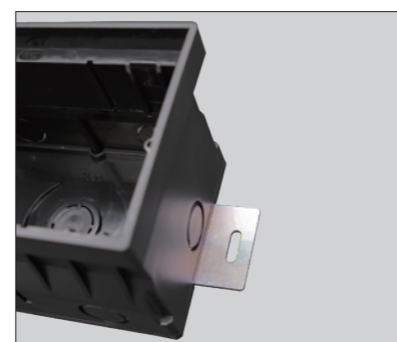
Material specifications

Housing	12# Die-casting grey powder coated aluminum. T=60-80um Adhesion of ISO class 1/ASTM class 4B
Front cover	Hard chromeplated Stainless steel 316#
LED	SMD3030 type LED
Cable gland	IP67 PG9 PA66
Gasket	Molding shaped silicone seal
LED Driver	Constant Voltage Input, Constant Current Output
Operating temperature	-20°C~40°C
Power Cable	H05RN-F 2X1.0mm ² L=0.5m (low voltage) H05RN-F 3X1.0mm ² L=0.5m (high voltage)
Mounting sleeve	ABS 090#
Dimmable Support	Triac PWM 1-10V Dalí

Item	Light source	Input voltage(V)	Typical operating current(mA)	Typical consumption(W)	Typical luminance(lm)	IK rate
GKD1CD1834	18x0.2W	24V DC 120/240	24V = 125 120V = 56 240V = 29	24V = 3.0 120V = 3.4 240V = 3.9	Cool white =80 Warm white =70	09
GKD1CC1834	18x0.2W	24V DC 120/240	24V = 125 120V = 56 240V = 29	24V = 3.0 120V = 3.4 240V = 3.9	Cool white =65 Warm white =56	09



The clips have been specially modified and upgraded to have a stronger structure in order to make up the absence of the screw fixing.



There are two metal support plates on the bottom of the sleeve. It is used for fixing and preventing the mounting sleeve shifting while filling the concrete. These will simply installer and electrician while they are recessing the sleeves.

