



Diffused Beam  
Recessed LED Wall Light  
Stainless steel front cover with Matte Surface



GKD1FD3634

GKD1FC3634

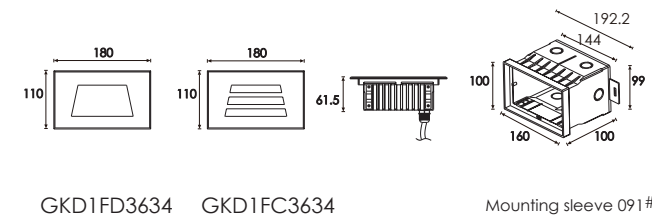
LED Colour Temperature

- 2000K
- 3000K
- 6000K

Optics

- N/A

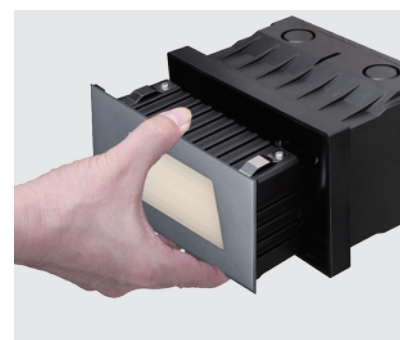
Outer Dimensions



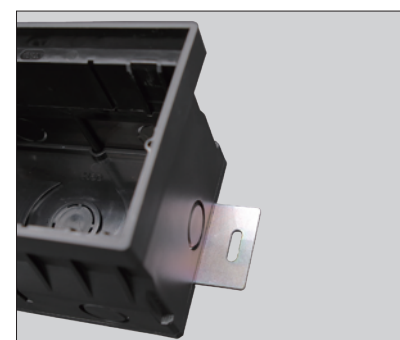
Material specifications

|                       |   |
|-----------------------|---|
| Housing               | 12# Die-casting grey powder coated aluminum, T=60-80um Adhesion of ISO class 1/ASTM class 4B            |
| Front cover           | Hard chromeplated Stainless steel 316#  |
| LED                   | SMD3030 type LED  |
| Cable gland           | IP67 PG-9 PA66  |
| Gasket                | Molding shaped silicone seal  |
| LED Driver            | Constant Voltage Input, Constant Current Output   |
| Operating temperature | -20°C~40°C  |
| Power Cable           | H05RN-F 2X1.0mm <sup>2</sup> L=0.5m (low voltage)<br>H05RN-F 3X1.0mm <sup>2</sup> L=0.5m (high voltage) |
| Mounting sleeve       | ABS 091#  |
| Dimmable Support      | Triac PWM 1-10V Dali  |

| Item       | Light source | Input voltage(V)  | Typical operating current(mA)   | Typical consumption(W)           | Typical luminance(lm)            | IK rate |
|------------|--------------|-------------------|---------------------------------|----------------------------------|----------------------------------|---------|
| GKD1FD3634 | 36x0.1W      | 24V DC<br>120/240 | 24V =235<br>120V=100<br>240V=55 | 24V =5.5<br>120V=6.7<br>240V=6.6 | Cool white=180<br>Warm white=166 | 09      |
| GKD1FC3634 | 36x0.1W      | 24V DC<br>120/240 | 24V =235<br>120V=99<br>240V=55  | 24V =5.5<br>120V=6.7<br>240V=6.5 | Cool white=180<br>Warm white=160 | 09      |



The clips have been specially modified and upgraded to have a stronger structure in order to make up the absence of the screw fixing.



There are two metal support plates on the bottom of the sleeve. It is used for fixing and preventing the mounting sleeve shifting while filling the concrete. These will simply installer and electrician while they are recessing the sleeves.

