

# HBL LX Series

## LED Linear High Bay 80W-300W

### Features

- 0.8mm steel housing
- 1.2mm aluminum heatsink
- Poly carbonate cover
- Replaceable LED strips
- Isolated LED driver
- 120° beam angle
- Easy maintenance
- CRI: >83
- Lifespan: >50,000 hrs
- 5 years warranty
- Voltage: 100-277V/347V/480V
- Wattage: 80W-300W
- Frequency: 50-60Hz
- Power Factor: 0.95-0.99
- Harmonic Distortion: THD<13%
- Ambient Temp: 20°C-50°C
- Dimmable: 0-10V
- Microwave Sensor: ON/OFF Sensor/Standby Motion Sensor
- Emergency: 1hrs/2hrs/3hrs emergency time



### Options

- 2FT/4FT/5FT
- CCT 3000K/4000K/5000K/6500K
- Dimmable
- Microwave motion sensor
- Emergency battery back up
- Colour: White, Silver, Black

### Dimensions



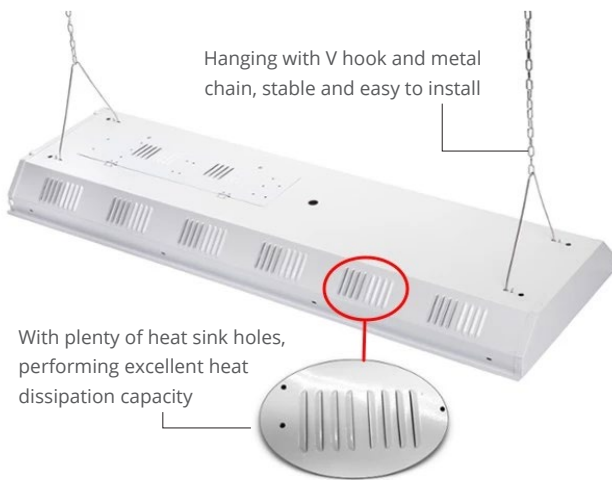
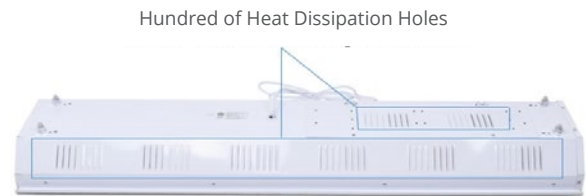
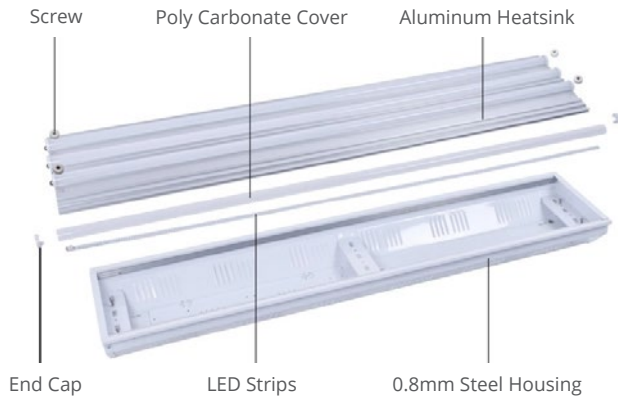
Model	Wattage	Dimensions (mm) L * W * H	Lumens
GOHBL-80W-2F-LX	80W	615 x 285 x 100	8400lm / 10400lm
GOHBL-120W-2F-LX	120W	615 x 285 x 100	12600lm / 15600lm
GOHBL-80W-4F-LX	80W	1215 x 285 x 100	8400lm / 10400lm
GOHBL-120W-4F-LX	120W	1215 x 285 x 100	15600lm
GOHBL-160W-4F-LX	160W	1215 x 285 x 100	19200lm
GOHBL-200W-5F-LX	200W	1500 x 285 x 100	24000lm
GOHBL-120W-4F-LX	120W	1215 x 285 x 100	12600lm / 15600lm
GOHBL-180W-4F-LX	180W	1215 x 285 x 100	23400lm
GOHBL-240W-4F-LX	240W	1215 x 285 x 100	28800lm
GOHBL-300W-5F-LX	300W	1500 x 285 x 100	36000lm



# HBL LX Series

## LED Linear High Bay 80W-300W

### More Details



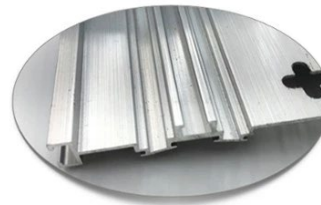
Hanging with V hook and metal chain, stable and easy to install

With plenty of heat sink holes, performing excellent heat dissipation capacity



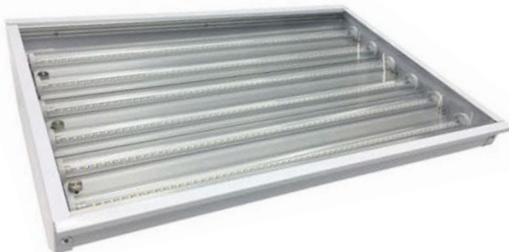
#### Suspended Accessories

- V shape hook
- Suspended chain
- Ceiling brackets



1.2mm thickness heat sink, ensure great heat dissipation

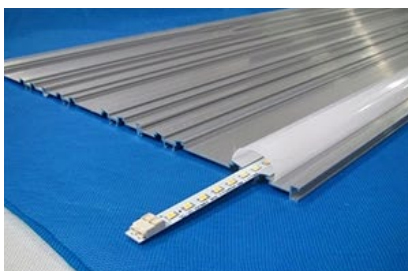
4 LED strips for 80W/120W/160W/200W  
6 LED strips for 120W/180W/240W/300W



SMD 2835 chips, over 130lm/w;  
Replaceable LED strip, easy for maintenance



Clear PC lens and Milky PC lens optional



#### Options:



Acrylic cover - dustproof



Wire guard - ball proof

# HBL LX Series

## LED Linear High Bay 80W-300W

### CCT



### Optional



Wire Guard



Acrylic Cover



Emergency Battery Back Up



Microwave Motion Sensor

### Installation

Ensure that power is turned off before installation.

<p>Open the end cap by removing the screws</p>	<p>Remove the aluminum plate from the housing</p>	<p>Pass the power cable through the hole of housing and make connection to the terminal blocks</p>
<p>① </p>	<p>② </p>	<p>③ </p>
<p>Screw the housing to the ceiling</p>	<p>Reinstall the aluminum plate to the housing</p>	<p>Reinstall the end cap to the housing</p>
<p>④ </p>	<p>⑤ </p>	<p>⑥ </p>